



Made With Pride In The U.S.A.

Lumenite Control Technology, Inc.

2331 N 17th Ave. Franklin Park, IL 60131 Phone : 847-455-1450

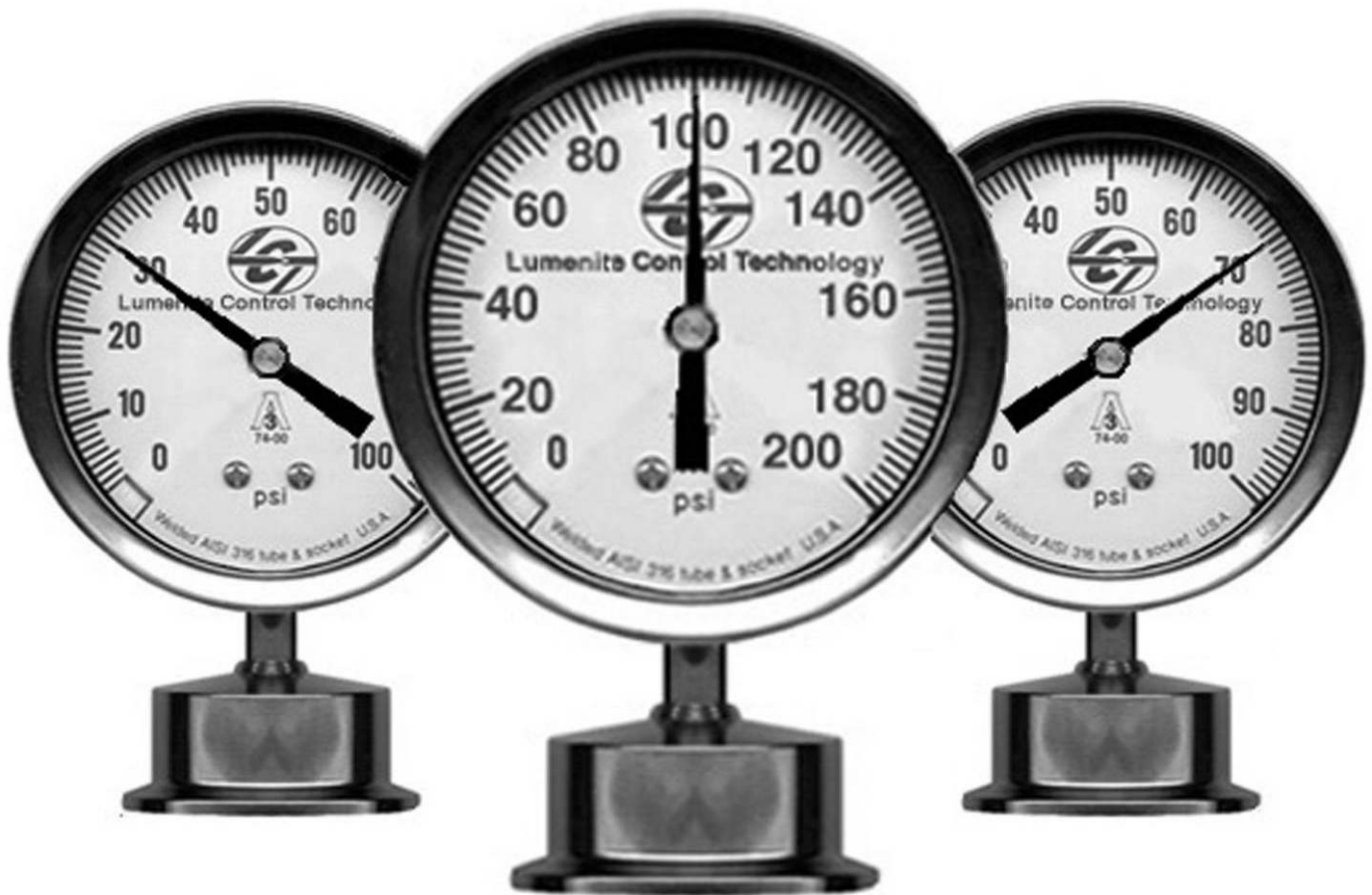
Web Site : www.lumenite.com E-Mail : customerservice@lumenite.com



We Now Accept . . .

VISA MasterCard

3A Sanitary Pressure Gauges ANSI Grade 'A' Accuracy Conform To All 3A Sanitary Standards

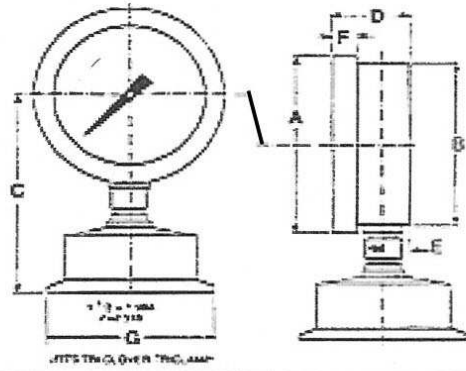


- Conforms to all 3A sanitary standards with ANSI grade "A" accuracy
- Stainless Steel welded tube and socket
- Electropolished 316L stainless steel diaphragm
- Available in every type sanitary connection fitting
- 100% helium leak tested
- All stainless steel internal mechanism
- Ambient temperature range = up to 300°F standard
- 100% hand calibrated and certified to exceed the current ASME B40.1 pressure gauge publication
- 90mm standard case, larger sizes available on special order
- Calibrated accuracy = 1.5% f.s. for ranges 100 p.s.i. or more
- All gauges designed for CIP clean in place. Dry gauges suitable for autoclave sterilization
- All gauges designed to withstand 50% over-pressure error with minimal loss of accuracy
- 100% filled with Dow chemical, high purity, pharmaceutical grade OPTIM glycerin, optional

Standard Pressure Ranges

Pressure

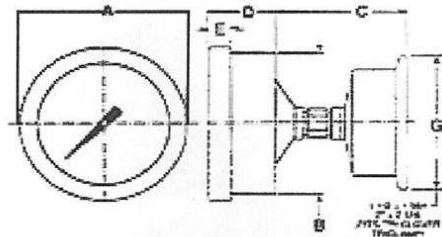
| psi | Figure int. | Minor grad. |
|---------|-------------|-------------|
| 0/15 | 1 | 0.2 |
| 0/30 | 5 | 0.5 |
| 0/60 | 5 | 1 |
| 0/100 | 10 | 1 |
| 0/160 | 20 | 2 |
| 0/200 | 20 | 2 |
| 0/300 | 30 | 5 |
| 0/400 | 50 | 5 |
| 0/600 | 50 | 10 |
| 0/800 | 100 | 10 |
| 0/1000* | 100 | 10 |



| A | B | C | D | E | F | G | |
|-----------------------------|----------------------------|---------------------------|---------------------------|---------------|---------------|------------------|-------------|
| | | | | | | 1 ^{1/2} | 2 |
| 3 ^{31/32} (101) | 3 ^{19/32} (91) | 3 ^{9/16} (90) | 1 ^{7/32} (31) | 13/32 (10) | 15/32 (12) | 2 (51) | 2.5 (64) |

Compound

| | Figure int. | | Minor grad. | |
|---------------|---------------|-----|-------------|-----|
| | In. Hg | psi | In. Hg | psi |
| | 30" Hg/15 psi | 5 | 3 | 1 |
| 30" Hg/30 psi | 10 | 5 | 1 | 1 |
| 30" Hg/60 psi | 10 | 10 | 2 | 1 |
| 30" Hg/100 | 10 | 10 | 2 | 1 |



| A | B | C | D | E | G | |
|-----------------------------|----------------------------|-----------|---------------------------|---------------|------------------|-------------|
| | | | | | 1 ^{1/2} | 2 |
| 3 ^{31/32} (101) | 3 ^{19/32} (91) | 2 (51) | 1 ^{3/16} (30) | 15/32 (12) | 2 (51) | 2.5 (64) |

Metric Pressure Ranges

Pressure

| Kg/cm ² (kilograms per Sq. centimeter) | bar | Figure interval | Minor graduation | kPa (kilopascal) | Figure interval | Minor graduation | Psi Outer scal of Dual range* |
|---|-------|--------------------|---------------------|---------------------|--------------------|---------------------|-------------------------------------|
| 0/1 | 0/1 | 0.1 | 0.01 | 0/100 | 10 | 1 | 0/14 |
| 0/1.6 | 0/1.6 | 0.2 | 0.02 | 0/160 | 20 | 2 | 0/22 |
| 0/2.5 | 0/2.5 | 0.5 | 0.05 | 0/250 | 50 | 5 | 0/35 |
| 0/4 | 0/4 | 0.5 | 0.05 | 0/400 | 50 | 5 | 0/55 |
| 0/6 | 0/6 | 0.5 | 0.1 | 0/600 | 50 | 10 | 0/85 |
| 0/10 | 0/10 | 1 | 0.1 | 0/1000 | 100 | 10 | 0/140 |
| 0/16 | 0/16 | 2 | 0.2 | 0/1600 | 200 | 20 | 0/220 |
| 0/25 | 0/25 | 5 | 0.5 | 0/2500 | 500 | 50 | 0/350 |
| 0/40 | 0/40 | 5 | 0.5 | 0/4000 | 500 | 50 | 0/550 |
| 0/60 | 0/60 | 5 | 1 | 0/6000 | 500 | 100 | 0/850 |

Vacuum

| | | | | | | | |
|------|------|-----|------|--------|----|---|--------|
| -1/0 | -1/0 | 0.1 | 0.01 | -100/0 | 10 | 1 | 30" Hg |
|------|------|-----|------|--------|----|---|--------|

Compound

| | | | | | | | |
|----------|----------|------|------|------------|-----|----|--------------|
| -1/0/1.5 | -1/0/1.5 | 0.05 | 0.05 | -100/0/150 | 50 | 5 | 30" Hg/0/20 |
| -1/0/3 | -1/0/3 | 0.05 | 0.05 | -100/0/300 | 50 | 5 | 30" Hg/0/40 |
| -1/0/5 | -1/0/5 | 0.5 | 0.1 | -100/0/500 | 50 | 10 | 30" Hg/0/70 |
| -1/0/9 | -1/0/9 | 1 | 0.1 | -100/0/900 | 100 | 10 | 30" Hg/0/125 |

Product Specifications

| | |
|--|--|
| ACCURACY | 1.5% F.S. for pressure ranges 100 psi and above. 2.0% F.S. for vacuum, compound and ranges below 100 psi |
| CASE AND RING MATERIAL | 300 series stainless steel |
| RING TYPE | bayonet, removable |
| BOURDON TUBE AND SOCKET MATERIAL | 316SS stainless steel 316L stainless steel |
| DIAPHRAGM MATERIAL AND SURFACE FINISH | 12 to 20RA |
| PROCESS CONNECTION | 1-1/2" or 2" Tri-clamp |
| CONNECTION LOCATION | lower or back |
| SYSTEM FILL | glycerin |
| WINDOW MATERIAL | polycarbonate black painted aluminum |
| POINTER | with external adjust (std.) |
| DIAL | white with black markings |
| MOVEMENT | 300 series stainless steel |
| AGENCY APPROVALS | 3A compliance ⁽¹⁾ |
| CLEAN OR STEAM IN PLACE (CIP OR SIP) | temperature limit of 300°F (149°C) |
| TEMPERATURE ERROR | ±0.16%/10°F change at 70°F |
| AUTOCLAVE OR STERILIZE | temperature limit of 300°F (149°C) |

Options

| | |
|--|--|
| LIQUID FILLED CASE⁽²⁾ | |
| USP FOOD GRADE GLYCERIN | available |
| FOOD GRADE SILICONE | available |
| NEOBEE-M20(SYSTEM FILL) | available |
| SHATTERPROOF GLASS WINDOW | available |
| POLYCARBONATE WINDOW | standard |
| POLYSULPHONE WINDOW | available (recommended for autoclave or sterilization) |
| 1-1/2" CHERRY BURRELL GH LINE CONNECTION | available |
| 1-1/2" OR 2" CHERRY BURRELL I LINE CONNECTION | available |
| CONNECTION AT 3:00 | available |
| CONNECTION AT 9:00 | available |
| SERIAL NUMBER OR SERVICE MARKING ON DIAL | available |
| TAGGING OF INSTRUMENT WITH SS TAG (WIRED) | available |
| EXTERNAL ZERO ADJUSTMENT, TAMPERPROOF DESIGN | available |
| ZERO & SPAN ADJUSTMENTS | standard (includes external zero adjust) |