

FDA RUBBER HOSE

Rubber Fab FDA-approved rubber hoses are designed to transport a wide variety of fluids without imparting odor or taste. These premium, reinforced hoses perform high-quality sanitary suction and/or discharge. Custom laylines are available. Some hoses are available in a variety of colors, and all are available in a variety of sizes, in bulk or fabricated assemblies.

RF-FDAE
RF-FDA
RF-FDAELF
RF-FDACC
RF-FDAEF

RF-FDAE – Food Grade EPDM Suction and Discharge Hose



TUBE:

Seamless White EPDM

COVER:

Grey EPDM Rubber (Abrasion and oil resistant)

REINFORCEMENT:

Two polyester spirals with dual helix wire

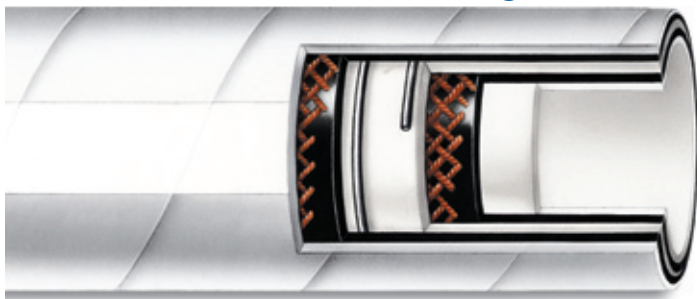
TEMPERATURE:

-40°F to 300°F

| Part Number | I.D. | O.D. | Working Pressure* | Bend Radius |
|-------------|------|-------|-------------------|-------------|
| 08RFFDAE | .500 | .931 | 150 psi | 2.50" |
| 12RFFDAE | .750 | 1.182 | 150 psi | 3.75" |
| 16RFFDAE | 1.00 | 1.500 | 150 psi | 4.00" |
| 24RFFDAE | 1.50 | 2.09 | 150 psi | 5.00" |
| 32RFFDAE | 2.00 | 2.600 | 150 psi | 6.00" |
| 40RFFDAE | 2.50 | 3.173 | 150 psi | 7.00" |
| 48RFFDAE | 3.00 | 3.718 | 150 psi | 8.00" |
| 64RFFDAE | 4.00 | 4.781 | 150 psi | 11.0" |

*at 68°F

RF-FDA – Food Grade Nitrile Suction and Discharge Hose



TUBE:

Seamless White Nitrile

COVER:

White Nitrile Rubber (Abrasion and oil resistant)

REINFORCEMENT:

Two polyester spirals with dual helix wire

TEMPERATURE:

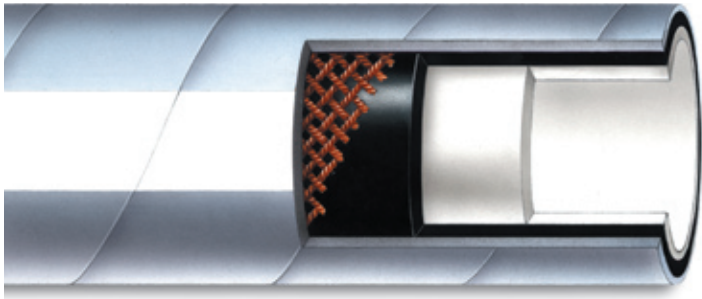
-40°F to 180°F

| Part Number | I.D. | O.D. | Working Pressure* | Bend Radius |
|-------------|------|-------|-------------------|-------------|
| 08RFFDA | .500 | .931 | 150 psi | 2.50" |
| 12RFFDA | .750 | 1.182 | 150 psi | 3.75" |
| 16RFFDA | 1.00 | 1.50 | 150 psi | 4.00" |
| 24RFFDA | 1.50 | 2.09 | 150 psi | 5.00" |
| 32RFFDA | 2.00 | 2.60 | 150 psi | 6.00" |
| 40RFFDA | 2.50 | 3.173 | 150 psi | 7.00" |
| 48RFFDA | 3.00 | 3.718 | 150 psi | 8.00" |
| 64RFFDA | 4.00 | 4.781 | 150 psi | 11.0" |

*at 68°F



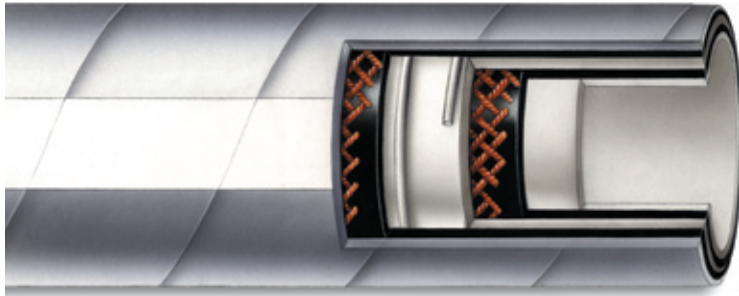
RF-FDAELF – Food Grade Lay Flat Hose



| TUBE: White FDA EPDM | Part Number | I.D. | O.D. | Working Pressure* | Weight Per Foot |
|--|-------------|------|-------|-------------------|-----------------|
| | 16RFFDAELF | 1.0 | 1.340 | 150 psi | .401 |
| | 24RFFDAELF | 1.5 | 1.888 | 150 psi | .662 |
| | 32RFFDAELF | 2.0 | 2.388 | 150 psi | .859 |
| COVER: Grey EPDM | 40RFFDAELF | 2.5 | 2.885 | 150 psi | 1.06 |
| REINFORCEMENT: Multiple textile plies | 48RFFDAELF | 3.0 | 3.388 | 125 psi | 1.25 |
| TEMPERATURE: -40°F to 300°F | 64RFFDAELF | 4.0 | 4.388 | 95 psi | 1.65 |
| | 96RFFDAELF | 6.0 | 6.388 | 75 psi | 2.06 |

*at 68°F

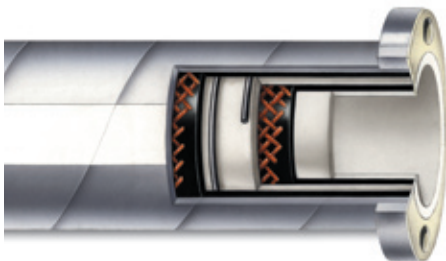
RF-FDACCRR – FDA Crush Resistant Hose



| TUBE: White FDA Chlorobutyl | Part Number | I.D. | O.D. | Working Pressure* | Weight Per Foot | Bend Radius |
|---|-------------|------|------|-------------------|-----------------|-------------|
| | 24RFFDACCRR | 1.50 | 2.25 | 250 psi | 1.16 | 5.00" |
| | 32RFFDACCRR | 2.00 | 2.78 | 250 psi | 1.52 | 7.00" |
| | 40RFFDACCRR | 2.50 | 3.28 | 250 psi | 1.93 | 13.00" |
| COVER: Grey EPDM | 48RFFDACCRR | 3.00 | 3.78 | 250 psi | 2.27 | 21.00" |
| REINFORCEMENT: Textile with monofilament helix | 64RFFDACCRR | 4.00 | 4.78 | 200 psi | 3.03 | 15.00" |

*at 68°F

RFFDAEF – Flanged Food Grade EPDM Suction and Discharge Hose



RF-FDAEF hose is the flanged version of our RF-FDAE food grade suction and discharge hose (front page, top hose). When ordering, simply add an "F" to the end of the RF-FDAE part number.

RF-FDAE RF-FDA RF-FDAELF RF-FDACCRR

Approvals

- 3A Sanitary Standard 1800
- FDA 21 CFR 177.2600
- USDA
- Conforms to the construction criteria of the Grade A Pasteurized Milk Ordinance

Features

- Custom laylines available
- Smooth inner-bore does not allow for entrapment
- Available in bulk or fabricated assemblies
- Available in 8 different colors
- Contact Rubber Fab for available lengths

RF-FDAELF – Lay Flat Features

- Tubing lays flat for easy storage
- Lightweight
- Resists external damage, i.e., crushing

RF-FDACCRR – Crush Resistant Features

- Crush and kink resistant
- Microbe and Bacteria free tube will not impart taste or odor
- Ozone and mild chemical resistance

Applications

- Milk product and milk transfer
- Milk transfer
- Water transfer
- Food and beverage
- Cosmetics
- CIP pharmaceutical applications
- Chemical transfer
- Dairy

Connections

- Stainless steel or non-metallic radially-crimped fittings

Also Available

- Rubber Fab offers a full line of high purity gaskets from mini to 12".



Rubber Fab Technologies Group
Limecrest Road
P.O. Box 626 • Andover, NJ 07821
phone: 973-579-2959 fax: 973-579-7275
www.rubberfab.com

Rubber Fab Technologies Group is a member of:

